

F

E

D

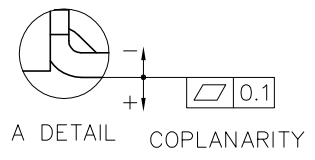
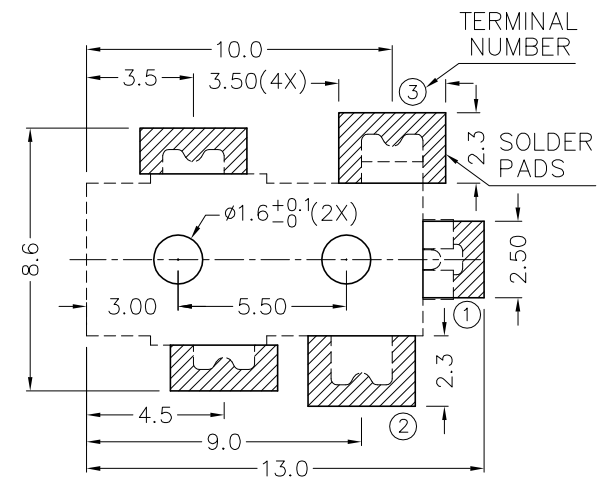
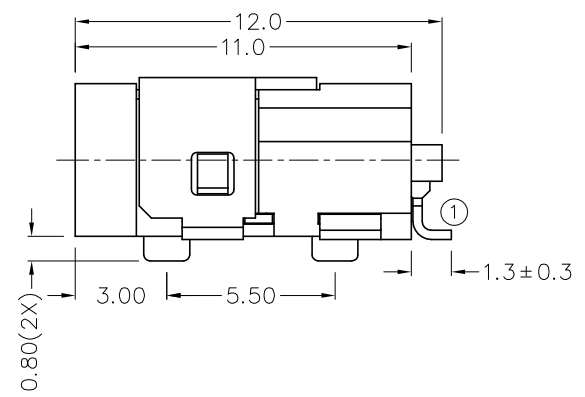
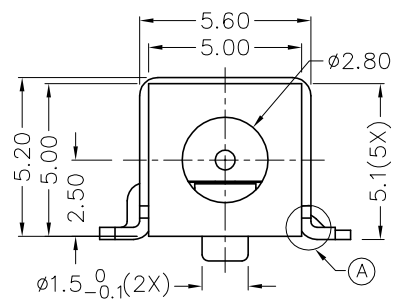
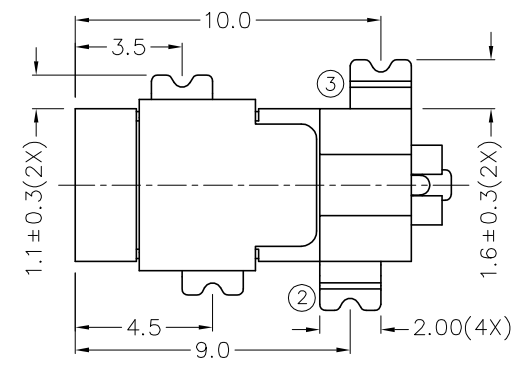
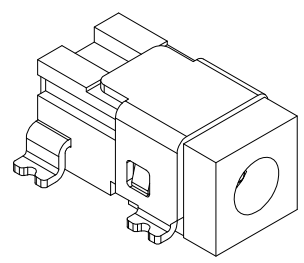
C

B

A

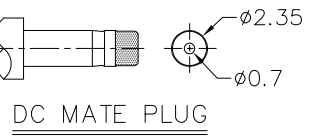
ZONE	SYMBOL	REVISION	APPROVAL	DATE
		ADDED INDICATION OF COPLANARITY	J.X.KUANG	27-4-2010

RoHS
Compliant



MODEL NO.	TDC-051DHS
SCHEMATIC	
CENTER PIN	φ0.65mm

* MATERIAL
 TERMINAL 1 : BRASS
 TERMINAL 2 : COPPER ALLOY
 TERMINAL 3 : BRASS
 SHIELD : COLD ROLLED STEEL
 HOUSING : PA6T



CHAMPWAY 冠泰电子有限公司
 CHAMPWAY ELECTRONICS CO., LTD.

DESIGN	T.Y.LI	DATE	26-7-2004	SCALE	4:1
DRAWING	T.Y.LI	DATE	27-4-2010	MATERIAL	*
CHECK		DATE		DWG. NO.	TZ\DC051DHS-PA6T/C
APPROVAL		DATE		SHEET	

PART NAME	HIGH CURRENT SMD DC POWER SOCKET	TOLERANCE UNLESS	0.0±0.2	UNIT:	
PART NO.	TDC-051DHS	OTHERWISE SPECIFIED:	0.00±0.1 0.000±0.05	mm	

F

E

D

C

B

A