

F

E

D

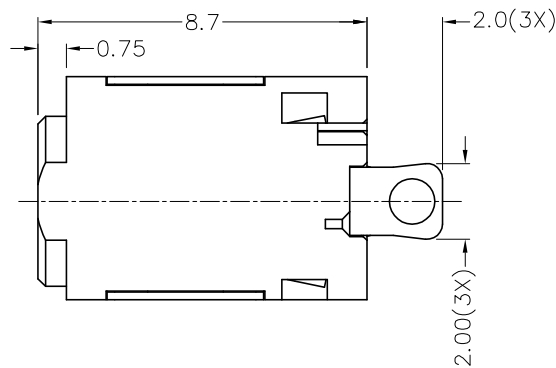
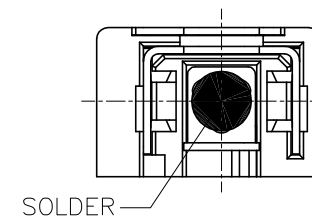
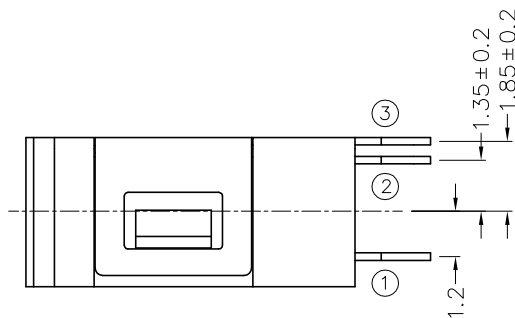
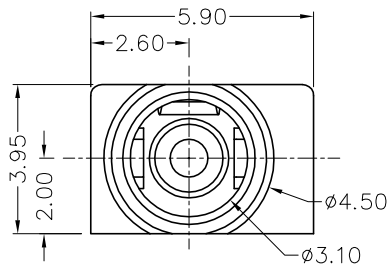
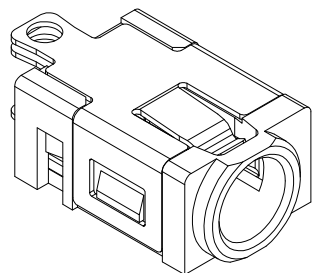
C

B

A

RoHS
Compliant

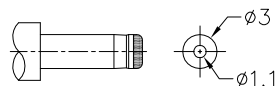
ZONE	SYMBOL	REVISION	APPROVAL	DATE



* MATERIAL

- CENTRE PIN : BRASS
- TERMINAL 1 : BRASS
- TERMINAL 2 : COPPER ALLOY
- TERMINAL 3 : COPPER ALLOY
- HOUSING : PA6T

MODEL NO.	TDC-082H
SCHEMATIC	
CENTER PIN	ø1mm



DC MATE PLUG

 **CHAMPWAY** 冠泰電子有限公司
CHAMPWAY ELECTRONICS CO., LTD.

DESIGN	X.N.ZHENG	DATE	23-4-2009	SCALE	5:1
DRAWING	T.Y.LI	DATE	2-6-2009	MATERIAL	*
CHECK		DATE		DWG. NO.	TZ\DC082H-PA6T/A
APPROVAL		DATE		SHEET	

PART NAME	HIGH CURRENT DC POWER SOCKET	TOLERANCE UNLESS	0.0±0.2	UNIT: 
PART NO.	TDC-082H	OTHERWISE SPECIFIED:	0.00±0.1 0.000±0.05	

F

E

D

C

B

A