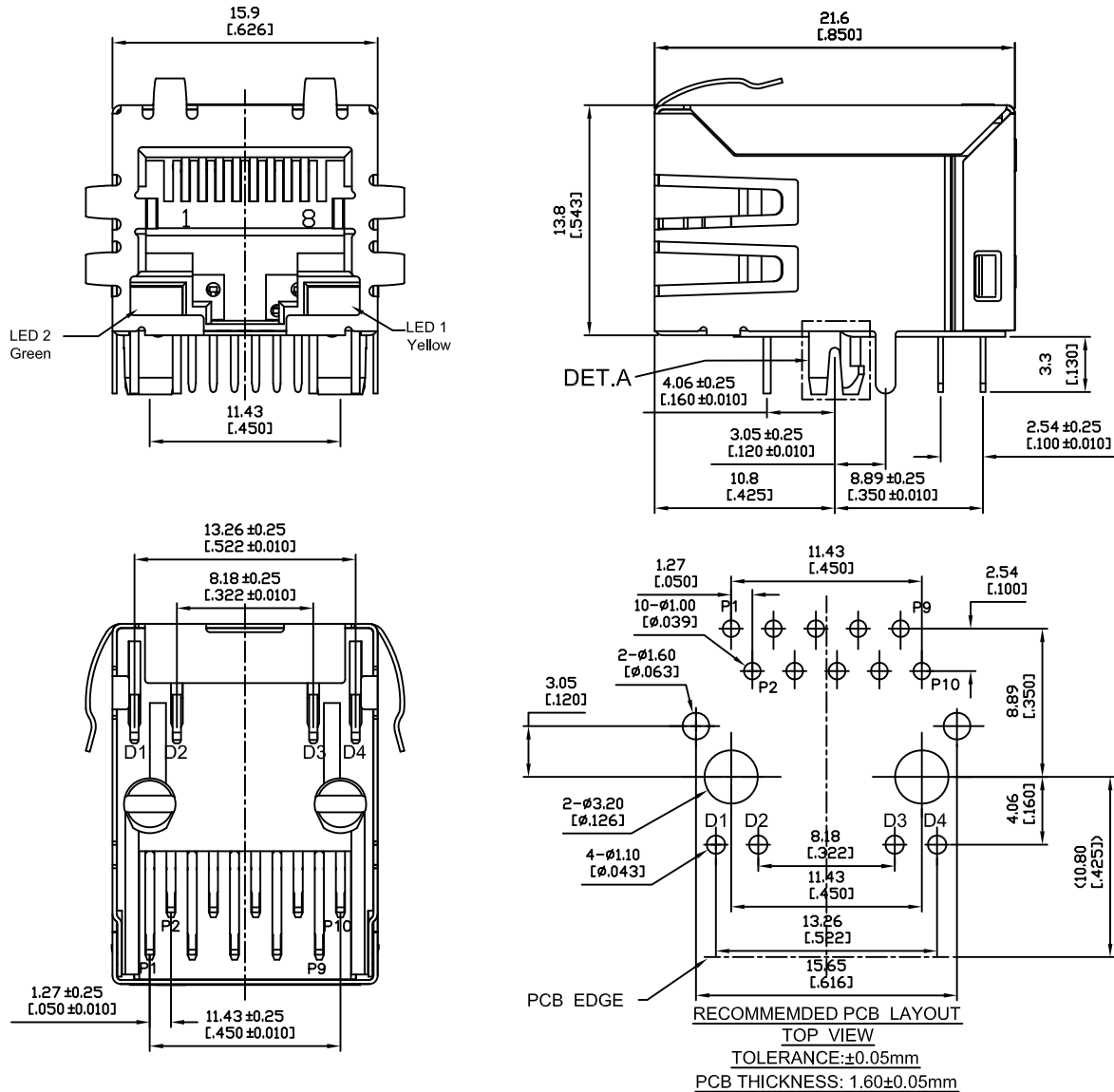
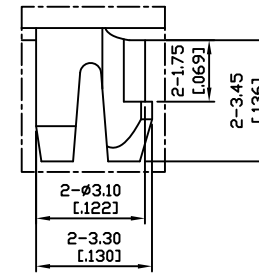
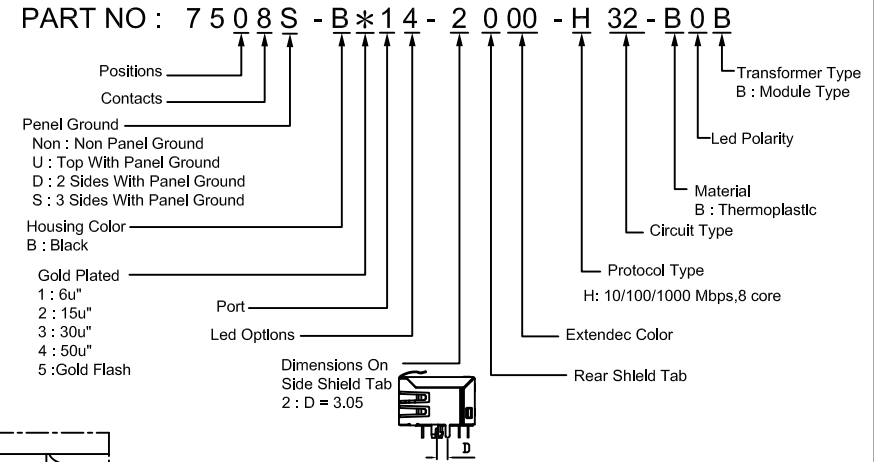


1. MECHANICAL DIMENSIONS:

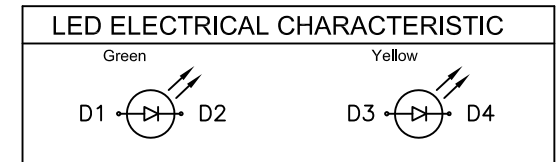


Note:

- 1.Housing: Thermoplastic UL 94V-0
- 2.Contact : Selective Gold Plating
- 3.Terminal: 0.35mm Thickness Copper Alloy Plated With Gold And Tin In Solder Area.
- 4.Shielded: Copper Alloy,Nickel Plating
- 5.Operating Temperature Range : 0°C~+70°C



DET.A
SCALE 2:1



CHAMPWAY 冠泰電子有限公司 CHAMPWAY ELECTRONICS CO., LTD.		TITLE	RJ45 Connector,Shielded, With Led With Transformer, 1000 Mbps Filter		UNIT	mm
		圖名			單位	inch
PART NO.	7508S-B*14-2000-H32-B0B		SCALE	1:1		
料號			比例			
REV.	A.0	DATE	2014-02-19			
版本		日期				
CHECKED BY	Jay		DRAWN BY	Sword		
審核			製圖			

ZONE	REV.	DESCRIPTION	DATE	DWG.	FILE NO : 75 (SERIES)
					TOLERANCE(公差): 0.000 mm ± 0.075 mm 0.00 mm ± 0.15 mm 0.0 mm ± 0.25 mm

