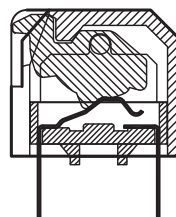
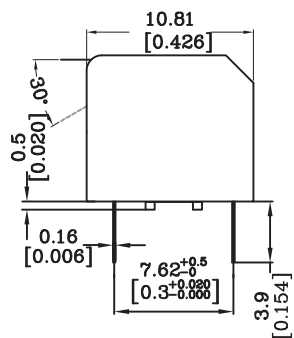
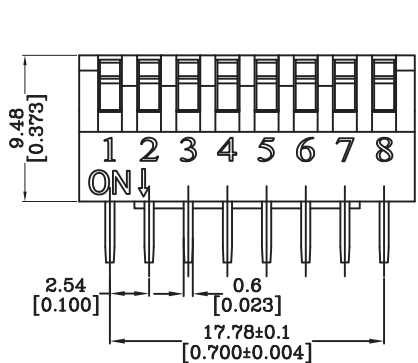


**P.C.B LAYOUT**



**SECTION A-A**

**MATERIALS**

BASE:UL94V-0 PBT Thermoplastic,  
Color:Black  
COVER:UL94V-0 PBT Thermoplastic,  
Color:Red,Black,Blue  
ACTUATORS:UL94V-0 PBT  
Thermoplastic, Color:White  
TERMINAL:Copper Alloy with gold plating

**MECHANICAL**

Operation Force:0.2kgf max.  
Stroke:2.0mm  
Operation Temp: -20°C to 70°C  
Storage temp: -40°C to 85°C

**ELECTRICAL**

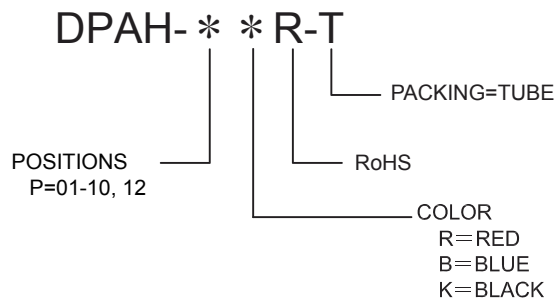
Electrical Life: 3000 operations per switch 24VDC,25mA.  
Non-Switching Rating: 100mA,500VDC.  
Switching Rating:25mA,24VDC.  
Contact Resistance:50m max.at initial.  
Insulation Resistance:(at 500VDC) 100m min.  
Dielectric Strength:500VAC/1minute.  
Capacitance:5PF max.  
Circuit:Single pole single throw.


REV.NO	DESCRIPTION	DRAWN	CHECKED	APPROVED
ONE	NEW RELEASE			

**PACKAGE**

P/N	X	Y	PER TUBE	PER BOX
DPAH-01 * R-T	4.06±0.1 [0.160±0.004]	-	121pcs	3872pcs
DPAH-02 * R-T	6.6±0.1 [0.260±0.004]	2.54 [0.100]	74pcs	2368pcs
DPAH-03 * R-T	9.14±0.1 [0.360±0.004]	5.08 [0.200]	53pcs	1696pcs
DPAH-04 * R-T	11.68±0.1 [0.460±0.004]	7.62 [0.300]	42pcs	1344pcs
DPAH-05 * R-T	14.22±0.1 [0.560±0.004]	10.16 [0.400]	34pcs	1088pcs
DPAH-06 * R-T	16.76±0.1 [0.660±0.004]	12.7 [0.500]	29pcs	928pcs
DPAH-07 * R-T	19.3±0.1 [0.760±0.004]	15.24 [0.600]	25pcs	800pcs
DPAH-08 * R-T	21.84±0.1 [0.860±0.002]	17.78 [0.700]	22pcs	704pcs
DPAH-09 * R-T	24.38±0.1 [0.960±0.004]	20.32 [0.800]	20pcs	640pcs
DPAH-10 * R-T	26.92±0.1 [1.060±0.004]	22.86 [0.900]	18pcs	576pcs
DPAH-12 * R-T	32±0.1 [1.260±0.004]	27.94 [1.100]	15pcs	480pcs

**HOW TO ORDER**



GENERAL TOLERANCE	ANGLE TOLERANCE	PROJECTION	DIP SWITCHES		
X. ±0.50	X. ±5°	UNITS MM	MODEL	DPAH-***R-T	
.X ±0.30	.X ±3°	SHEET SIZE A4			
.XX ±0.20	.XX ±2°				
DRAWING TYPE	CUSTOMER		 <p><b>冠泰电子有限公司</b> CHAMPWAY ELECTRONICS CO., LTD.</p>		
SCALE 2:1	SHEET 1				
DRAWING NO		1 SH			