

RevNo	Revision note	Date	Signature

NOTE

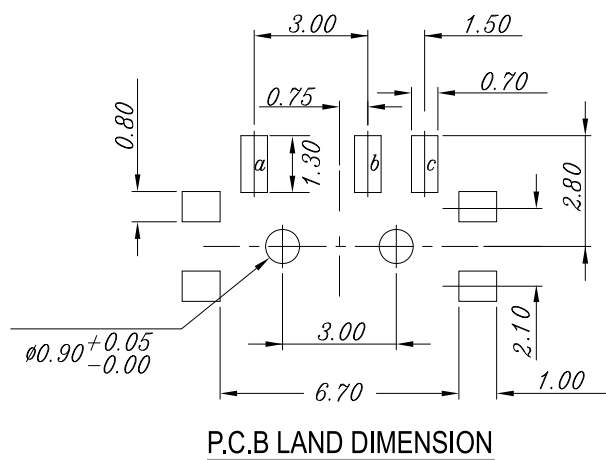
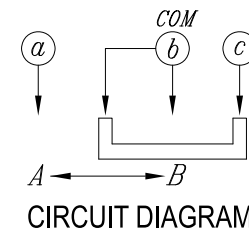
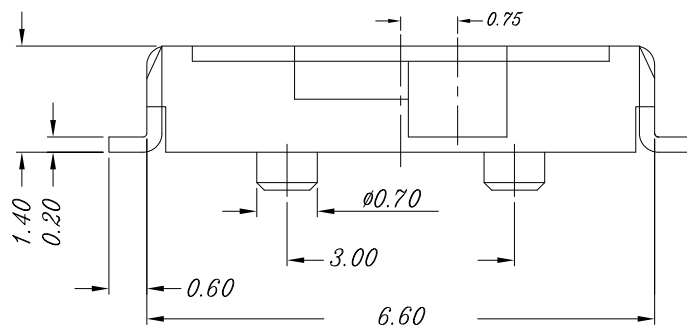
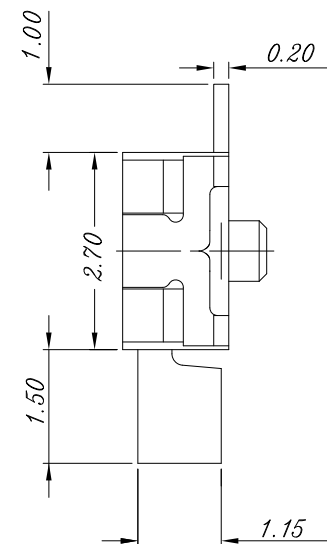
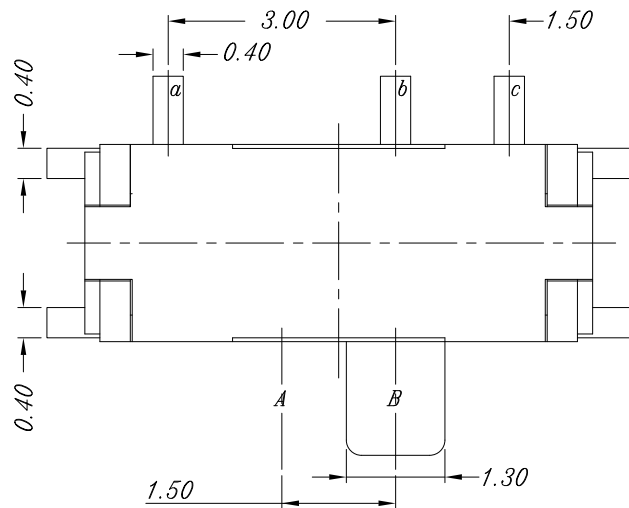
1. RATING : DC 12V 100mA
2. CONTACT RESISTANCE : 100mΩ MAX
3. GENERAL TOLERANCE : +/- 0.2 mm
4. MANUFACTURING SPECIFICATION
WOULD BE ACCORDANCE WITH WT0158
5. PART NO.(P/N.):

SS1200AME - * LLR - R

1P2T SLIDE SW
RIGHT ANGLE
SMD

PACKING
R=REEL

STEM COLOR
□=WHITE
■=BLACK



Designed by	L.Y.D		CHAMPWAY 冠泰电子有限公司 CHAMPWAY ELECTRONICS CO., LTD.	
Checked by			Unit	mm
Approved by		Scale	1/1	Date
Item	SLIDE SWITCH	Sheet	1/1	Rev.
Model	1P2T RA SMD	Drawing name	SS1200AME- * LLR- R	