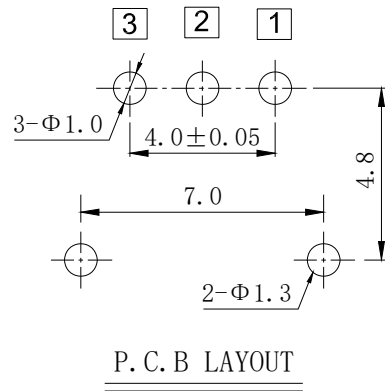
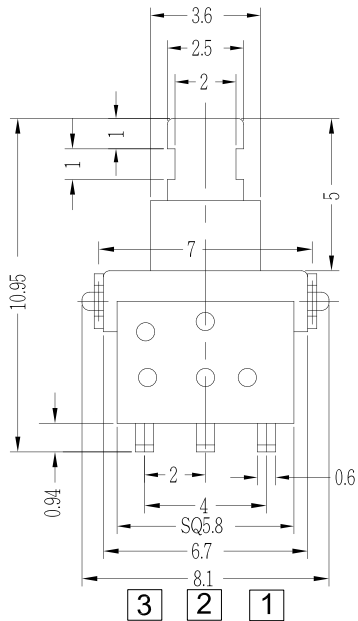


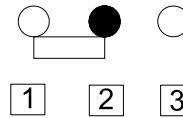
TOP VIEW



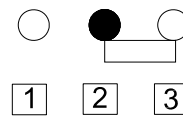
P. C. B LAYOUT

SCHEMATIC


FREE



PUSH



1. OPERATION: LOCK
2. RATING : 12 V DC , 50 mA
3. CONTACT RESISTANCE : 100 mΩ MAX.
4. INSULATION RESISTANCE : 500 V DC , 100 MΩ MIN.
5. OPERATION FORCE : 250±50 gf
6. OPERATION TEMPERATURE RANGE : -20°C ~ +70°C
7. OPERATION LIFE : 50,000 CYCLES

8					TOLERANCE UNLESS SPECIFIED					
7	TERMINAL	BRASS	2	SILVER PLATING	WITHIN 1.5mm : ±0.1mm					
6	COVER BUSHING	SUS	1		OVER 1.5mm : ±0.2mm					
5	SPRING	SUS	1			ISSUE	DATE	DESCRIPTIONS OF REVISION	APPD.	
4	CONTACT	COPPER ALLOY	1	SILVER PLATING		TITLE : PUSH SWITCH		UNIT : mm	DRAWING NO. : PS058AHP	
3	BASE	NYLON	1			MODEL: PS058AHP-LR-R		DWN.	DAVID	2016.9.03
2	COVER	NYLON	1					CHK'D	DAVID	
1	KNOB	NYLON	1					APPD.	STEVE	
NO.	PARTS	MATERIALS	Q'TY	FINISH	 CHAMPWAY 冠泰電子有限公司 <small>CHAMPWAY ELECTRONICS CO., LTD.</small>					