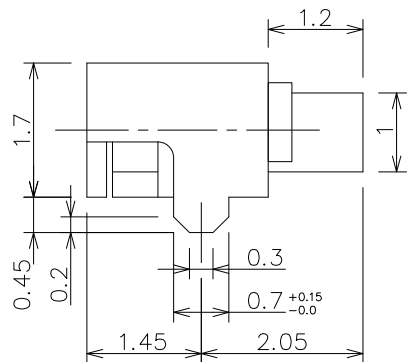
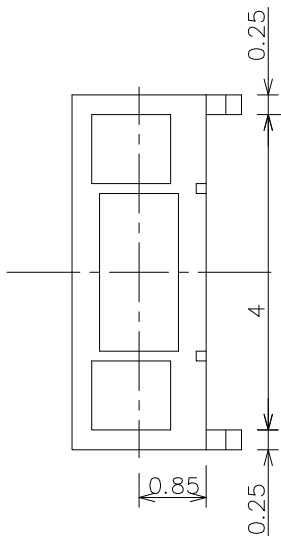
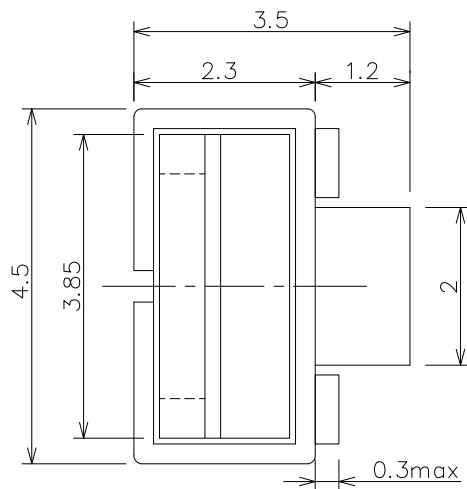
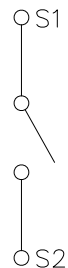


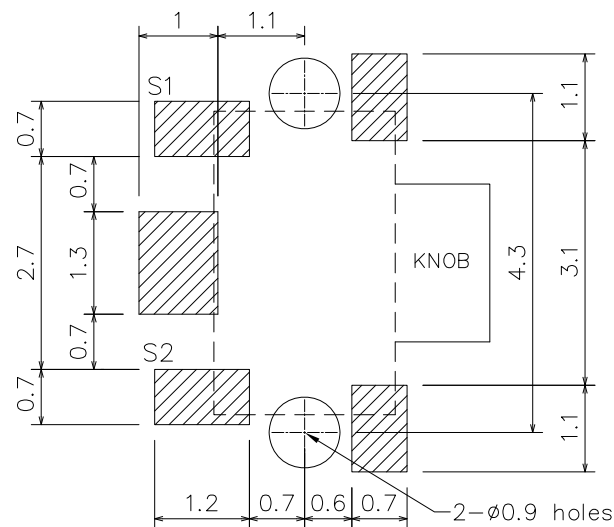
| | | | | |
|------|-----|-------------|------|-------|
| △ | | | | |
| △ | | | | |
| △ | | | | |
| △ | | | | |
| ZONE | REV | DESCRIPTION | DATE | APPD. |



Circuit Diagram



P.C.B Mounting pattern Dimension



Specifications

1. Rating : DC12V , 20mA max.
2. Circuit : 1C-1P
3. Travel : 0.2±0.1mm
4. Contact resistance : 100mΩ max.
5. Operating force : 160±50gf
6. Operating life : 100,000 cycles min.

| | | | | |
|----------|------|---------|-------------|--|
| DESIGN | TT.L | SCALE | | |
| DRAWING | TT.L | UNIT | mm | |
| CHECK | YS.L | SIZE | A4: 210*297 | |
| APPROVAL | YS.L | VERSION | 01 | |

| | | |
|---------------------------------------|------------|--------------------|
| TOLERANCE UNLESS OTHERWISE STATED(mm) | PART NAME | TACT SWITCH |
| less than 10 — ±0.2 | PART NO | TS104A2ME-035WBR-R |
| 10~30 — ±0.3 | DRAWING NO | |
| 30~100 — ±0.5 | DATE | 2010/09/07 |
| ANGLE — ±2° | | |